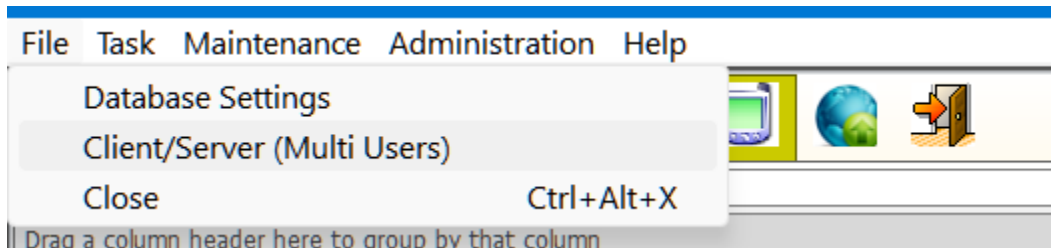


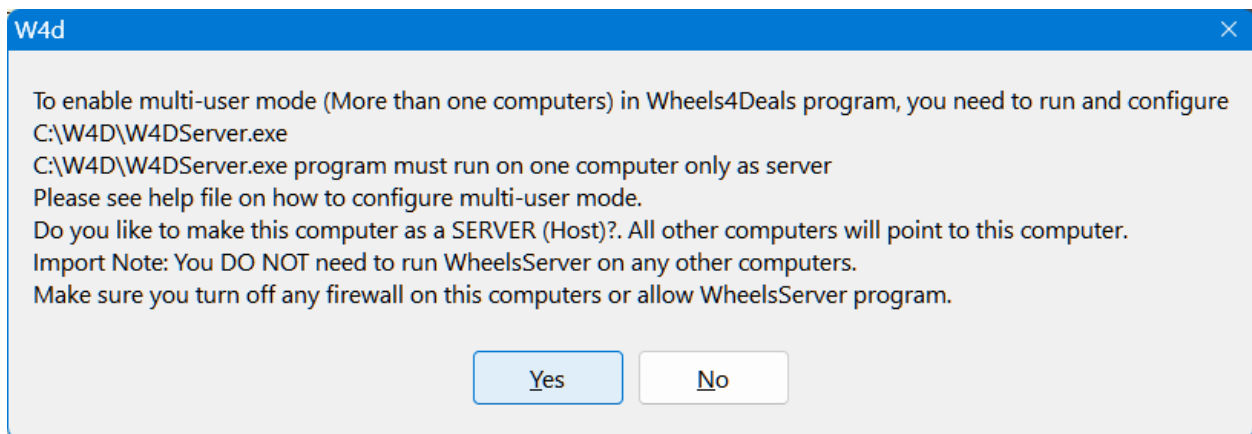
Important note: The server and all clients must be connected to the same router, through wire or wirelessly.

To ensure clients can see the server, all must connect to same router as the main computer connected, if you connect the client to another SSID wireless you can't see the server.

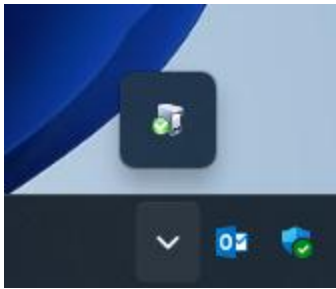
To configure multi user for Wheels4Deals software, first go to the main computer, open the program, click on File, then Client/Server Multi users to configure the DB server



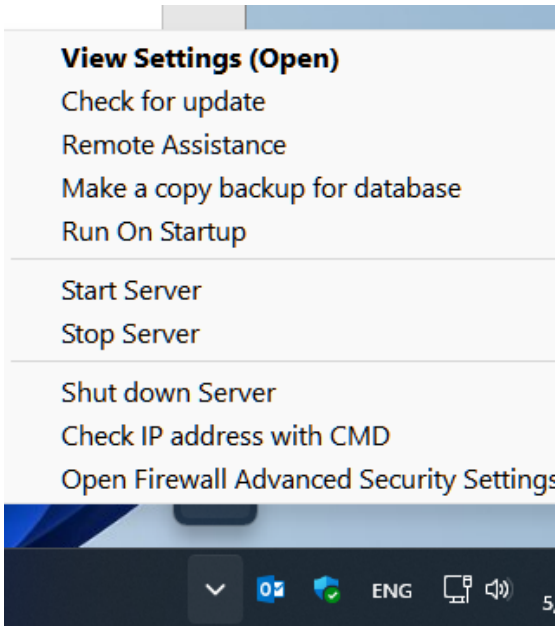
then click Yes on next screen.



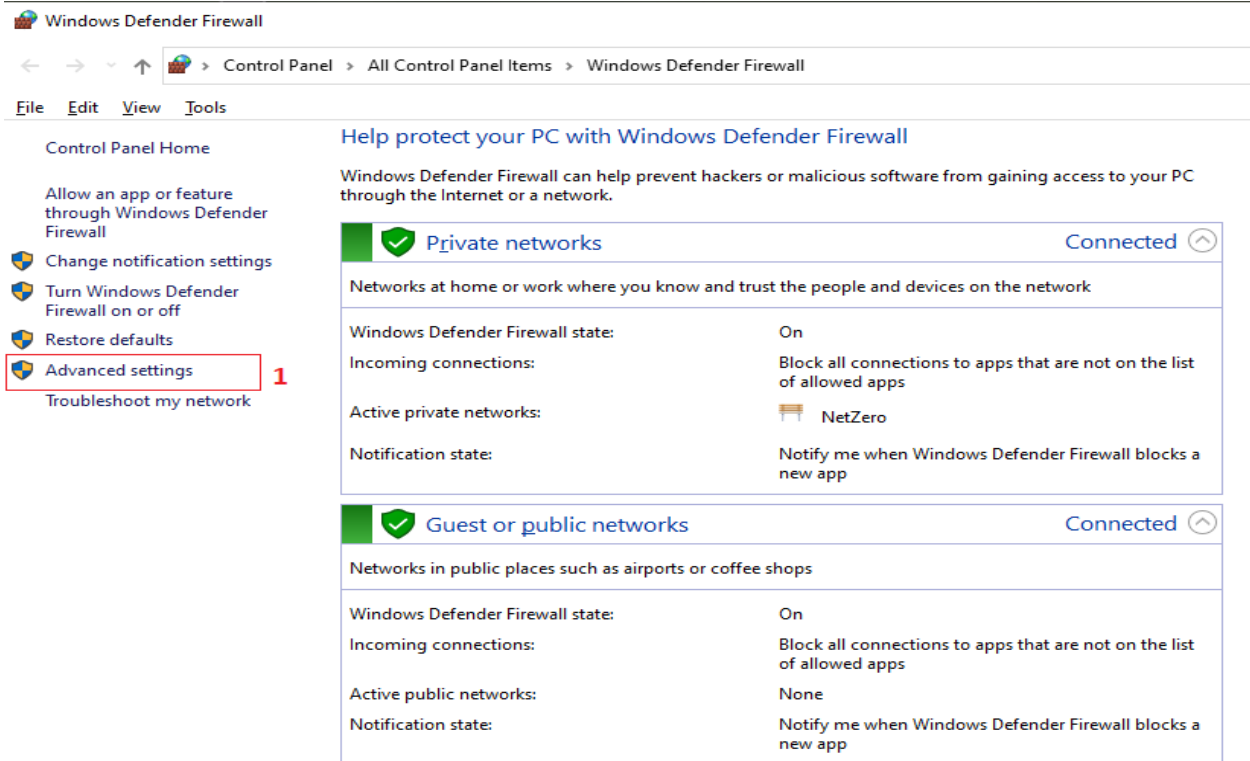
After you click Yes, you should see icon like this below on the taskbar group (beside the date time) lower right.



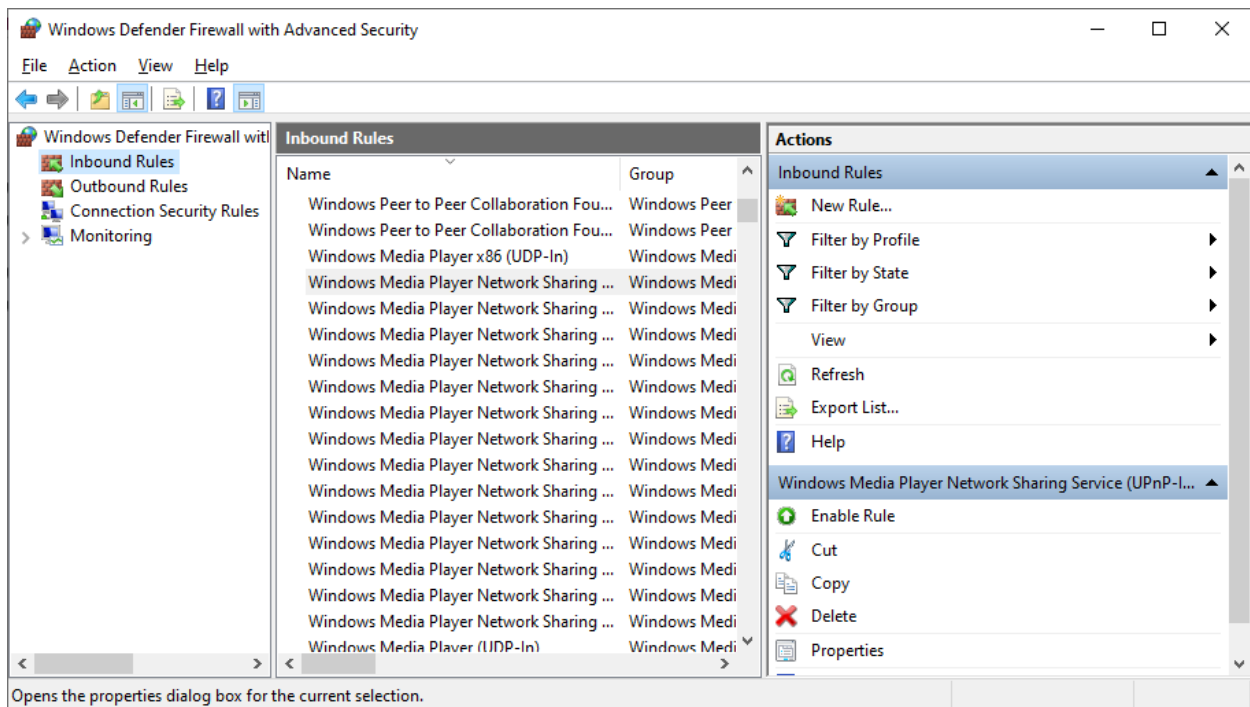
Right click on that icon, select Run On Startup, then do same and Click Open Firewall Advanced Settings.



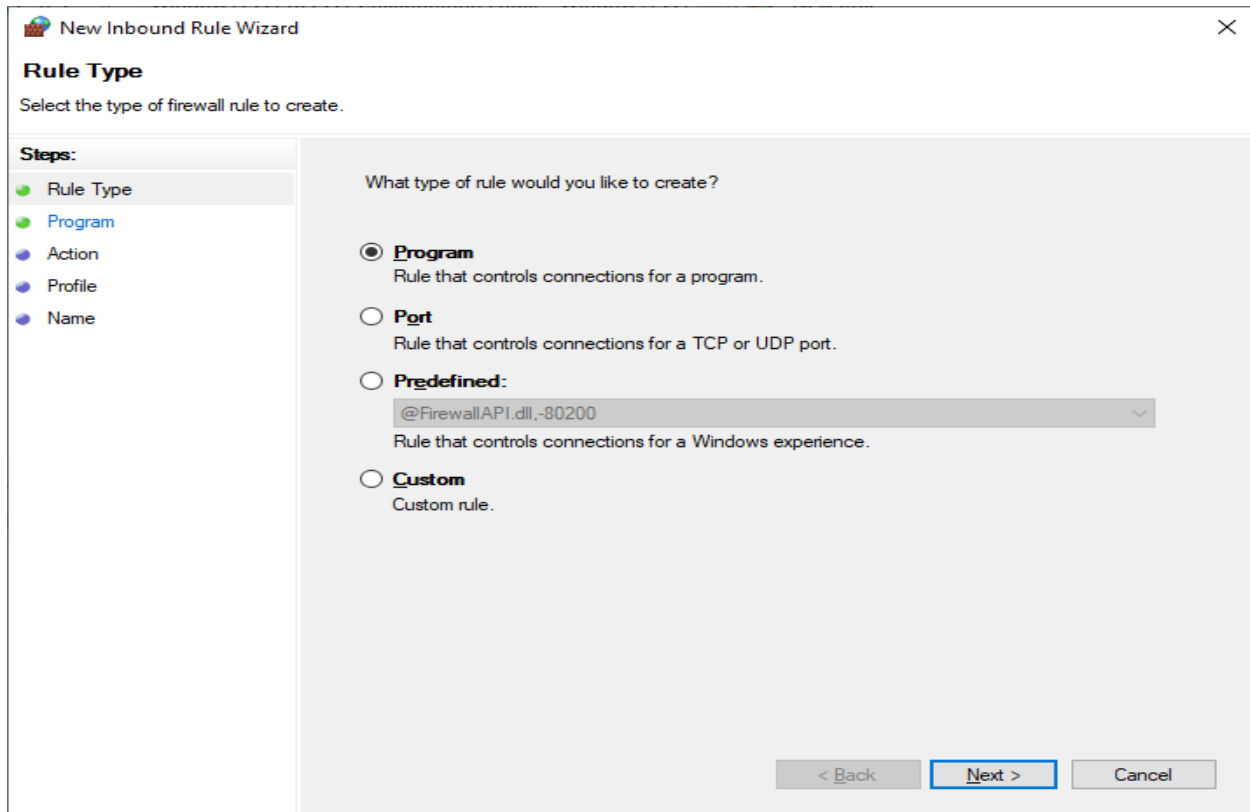
And then click on Advanced settings



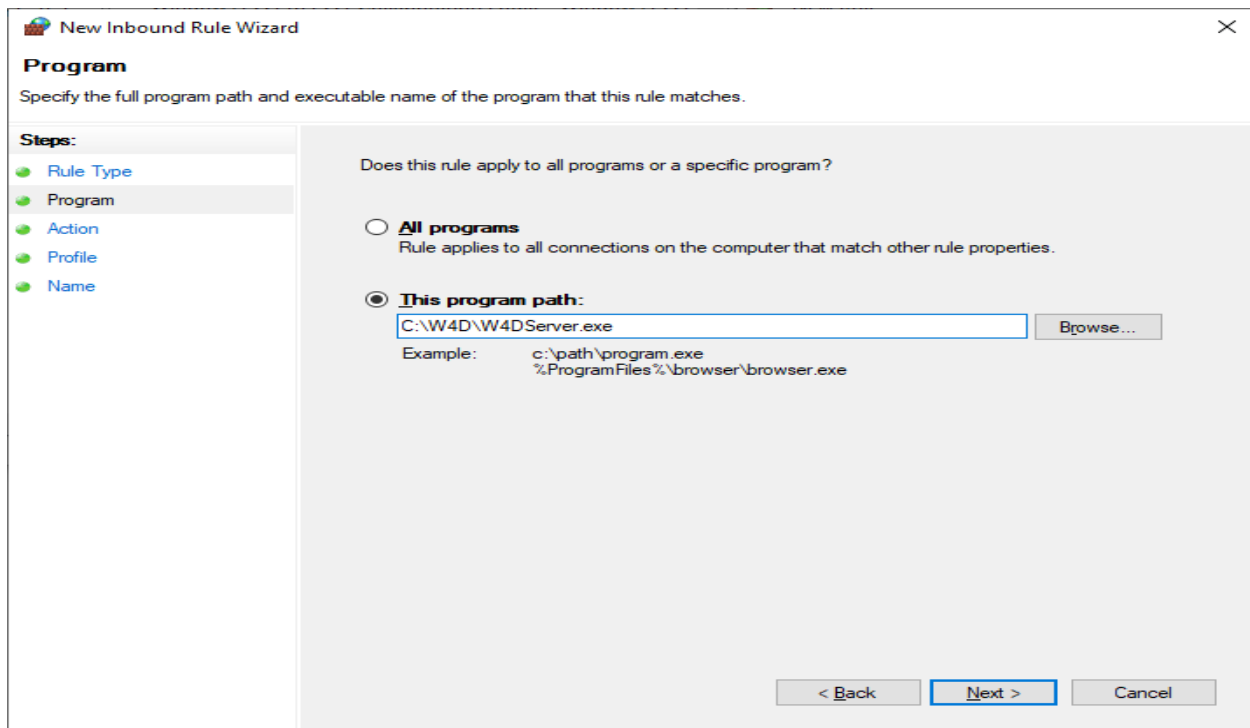
Now, click on Inbound Rules (on the left), then click on New Rule on the right box.



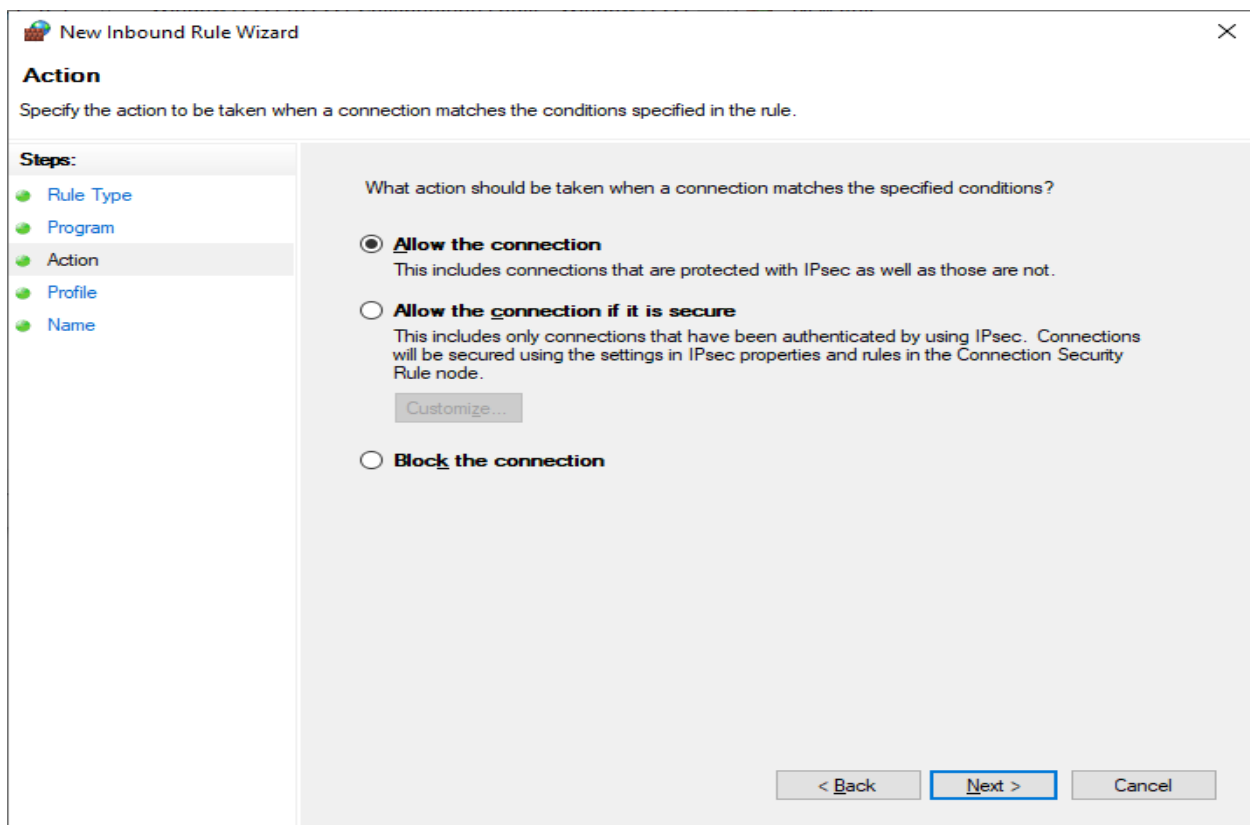
See image below, select program, click next



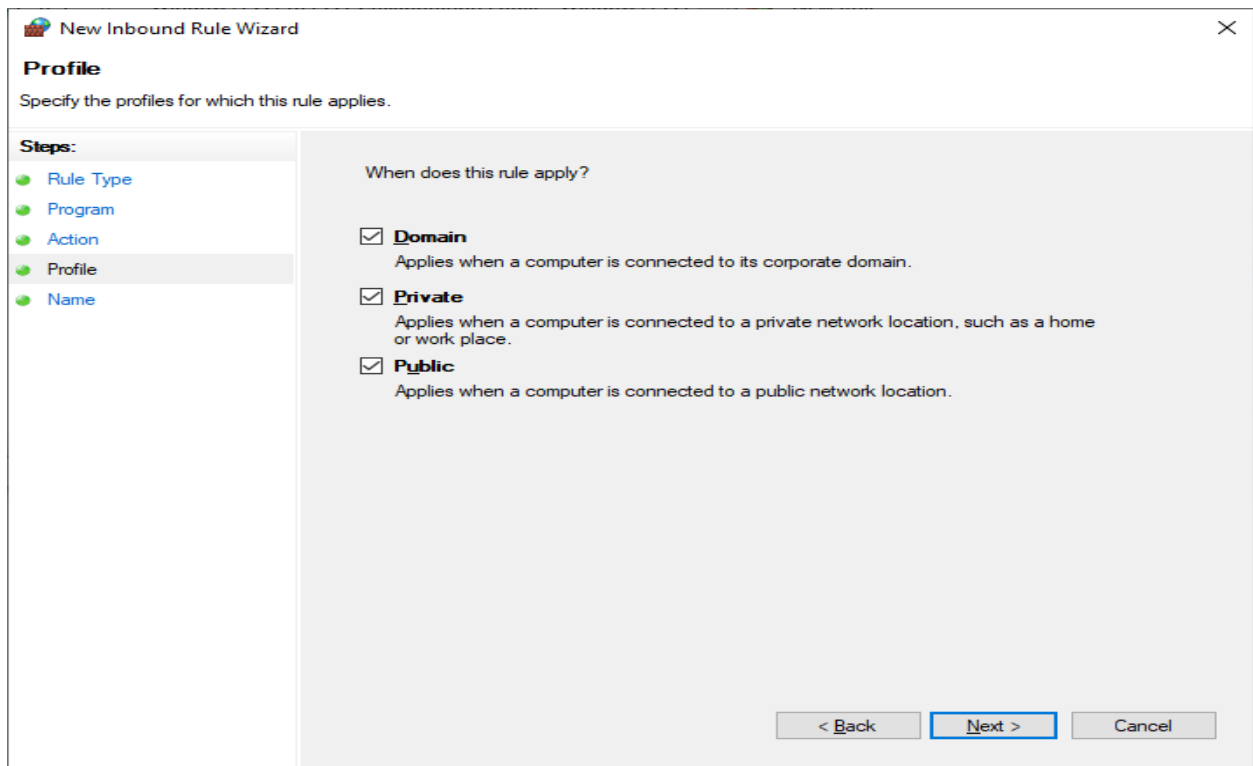
Then click on Browse, and the find , select C:\W4D\W4DServer.exe, then click next.



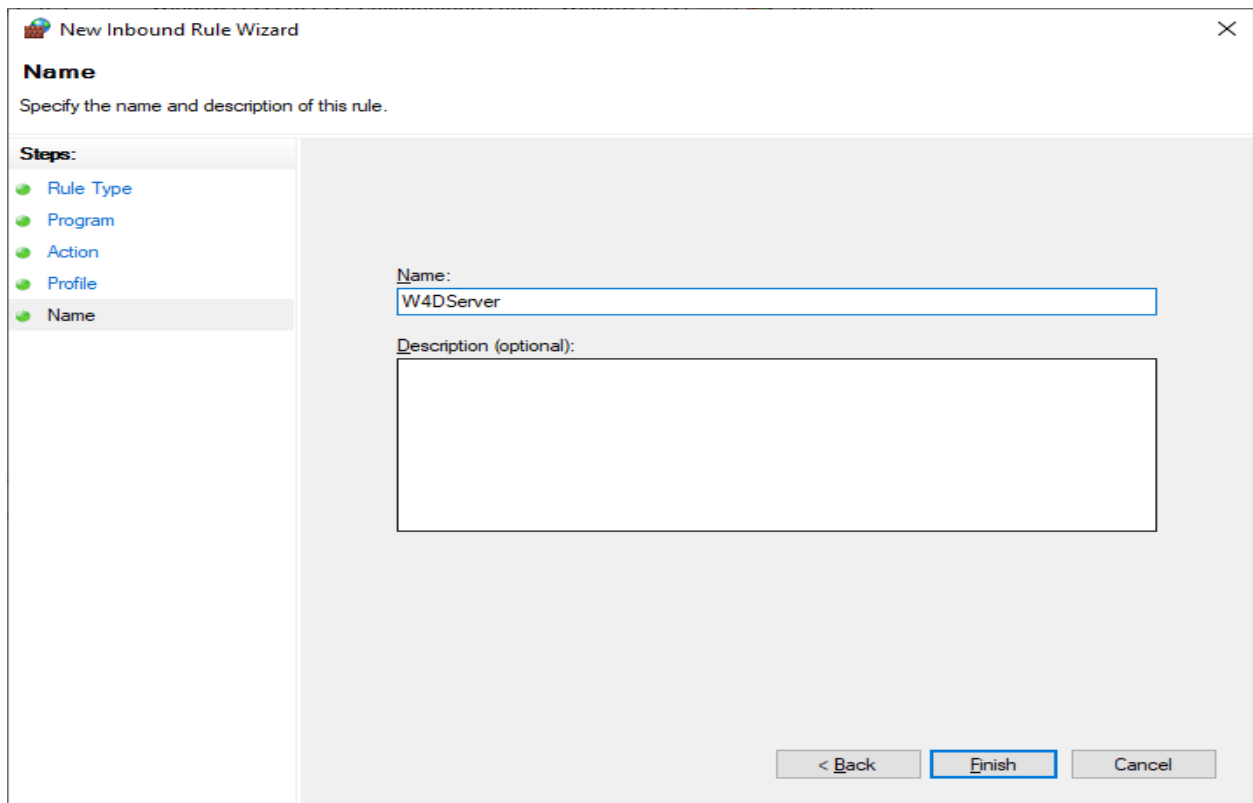
Select allow the connection, click next.



Keep all checked, click next.

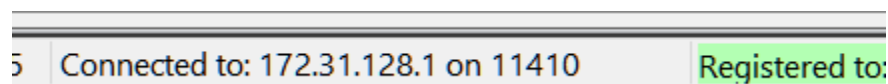


Type Rule name as W4DServer, finally click Finish



Now we done with inbound rule, do same for outbound. Go back to page #2 and click Outbound and follow other page after.

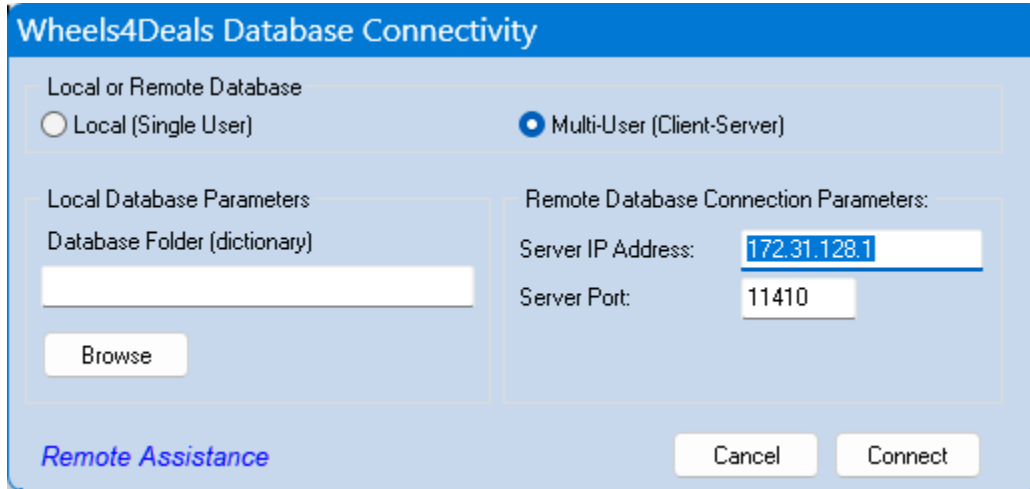
Now open the W4D program on the main computer, you should see connected to the remote server, on the bottom of the program,



Now let we do the client.

Go to the second computer, (if not already installed) install the software by choosing Client only during the installation.

After you done, you will see error (cannot find the server, click OK) then you will see screen like below:



Just select Multi-User and type main computer's IP address and the port you are using it.

Click connect. All done.

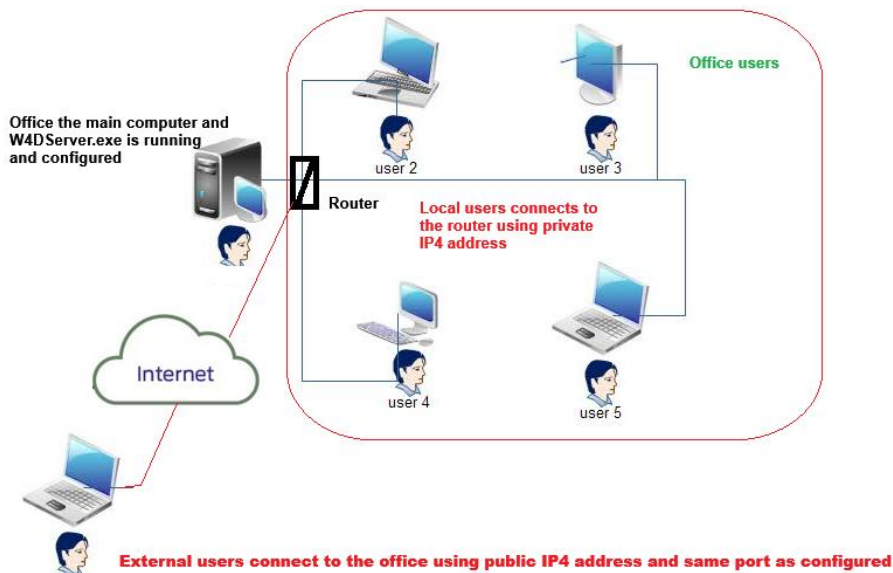
To ensure clients can see the server, all must connect to same router as the main computer connected, if you connect the client to another SSID wireless you can't see the server.

Outside connection:

1-Make sure the main computer is ON.

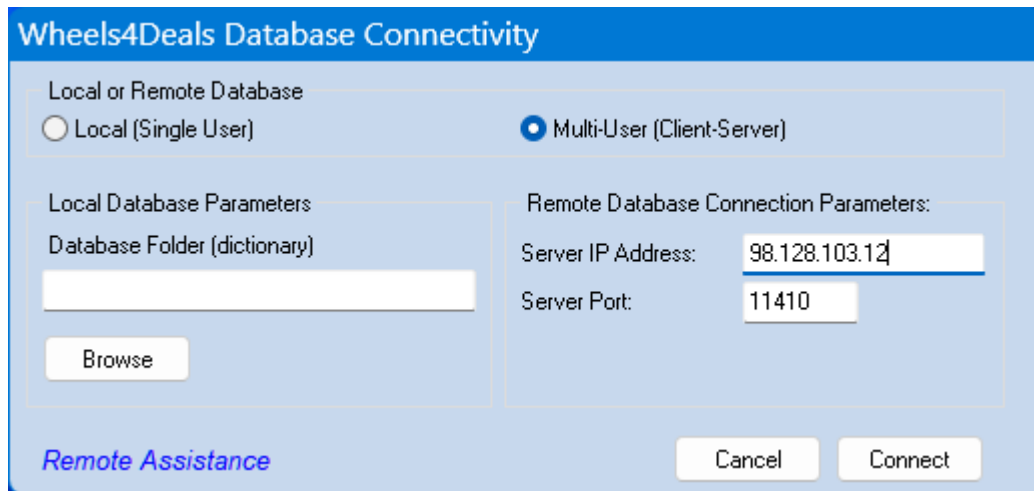
2- Configure your router to allow incoming connections and assign a port (using port forwarding) to the main computer, in this example, port 11410. Please see your router's manual (see, we can't help you on this). After you are done with that, just know your public IP address on the main computer before you go home; you can find your public IP address in many ways. On the main computer, just type "What is my IP?" in the browser.

To access from home or any remote location:



You will need IP4 not IP6 .

Finally, on the client's connection, you enter whatever public IP you have on the main computer in your office for the connection. (98.128.103.12 is just random IP address for our demonstration.) You have to type your real public IP.



Wheels4Deals Database Connectivity

Local or Remote Database

Local (Single User) Multi-User (Client-Server)

Local Database Parameters

Database Folder (dictionary)

Remote Database Connection Parameters:

Server IP Address:

Server Port:

[Remote Assistance](#)

When you see a message like the below: Basically, it means either the DB server is not running, or the IP address changed on the main computer, or you typed the incorrect IP address, or the firewall is blocking the incoming connection. All solutions on the PDF file.

